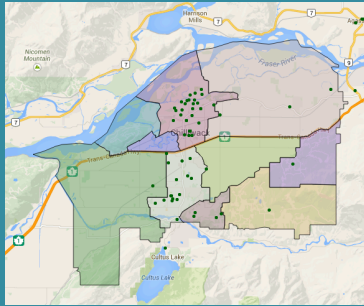


Chilliwack Official Community Plan Update



Project Description

The City of Chilliwack used **PlaceSpeak** to ask their residents what they think are the most important issues the city faces as the community grows as part of a Official Community Plan update

PlaceSpeak Contribution

PlaceSpeak provided a web-based platform to host an online survey, discussion forum, events page and notice board to gather feedback from residents.

Project Outcome

The online input received through PlaceSpeak was used in the development of the Draft 2040 Official Community Plan that was adopted by city council in August 2014.

Testimonial

“Overall we have found it to be a valuable addition to our public engagement program, providing opportunities for residents to learn more and contribute information at any hour of the day, providing a viable alternative to traditional planning approaches for sharing information and consulting with stakeholders.”

—Karen Stanton, Manager of Long Range Planning

Information

Geographic Scope

- City of Chilliwack
- Internal neighbourhood divisions

Engagement Methodologies

- Online survey
- Discussion forum
- Notice board
- Resource library

Timeframe

- November 2012- August 2014

Key Analytics

- 3,835 unique page views
- 88 connected participants
- 96 comments
- 899 comment views
- 36 notice board posts

Topic URL

- <https://www.placespeak.com/aldergrovecommunitycentre>

Project Contact Information

Karen Stanton, Manager, Long Range Planning
stanton@chilliwack.com | 604-793-2969